

Разрешите & pag type. Помогите сразу ответить.

- 60 -

- 61 -

833

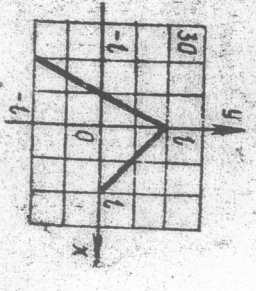
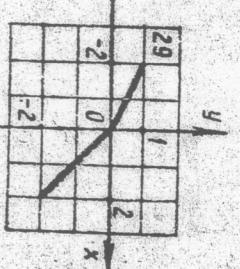
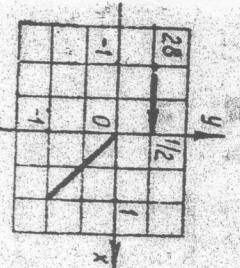
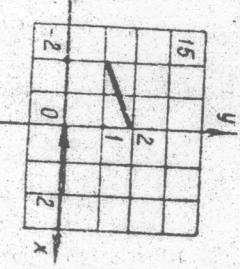
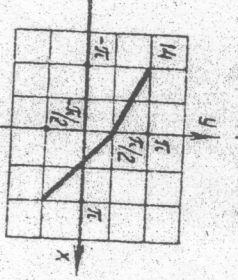
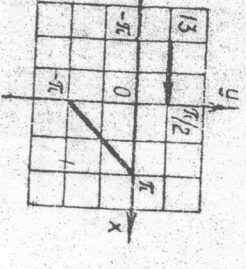
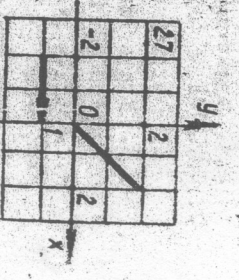
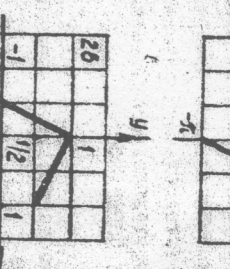
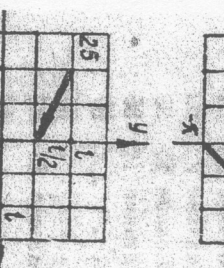
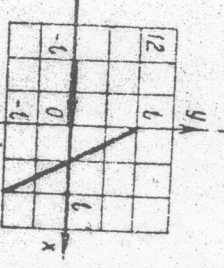
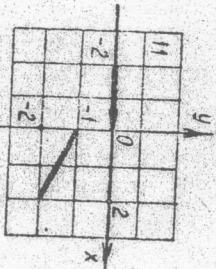
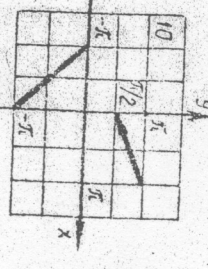
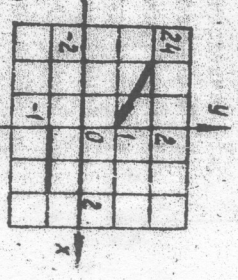
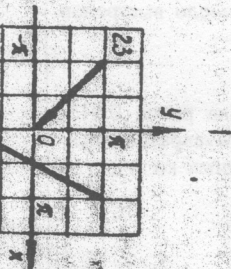
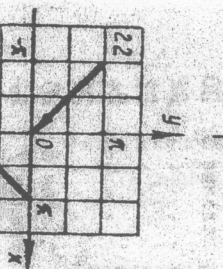
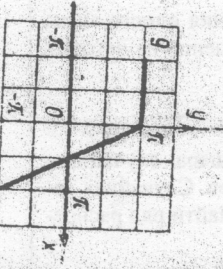
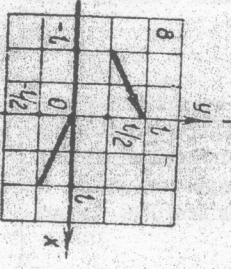
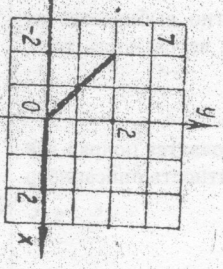
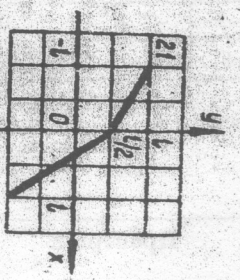
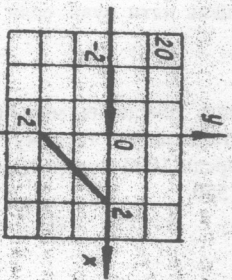
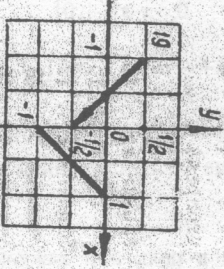
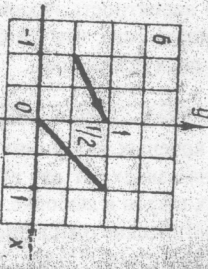
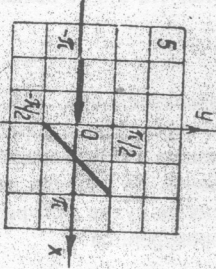
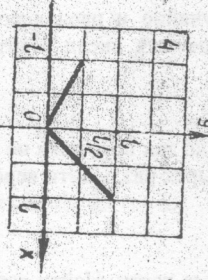
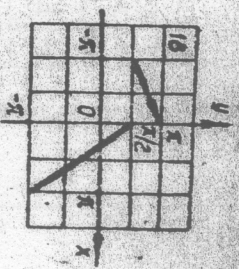
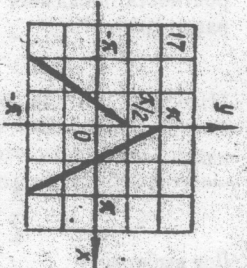
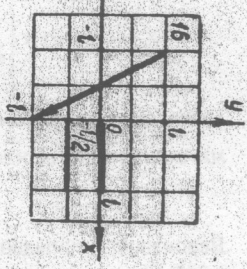
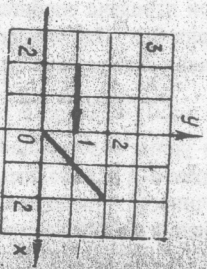
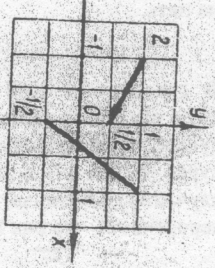
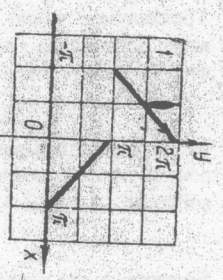


Рис. 26

Рис. 26

f=1

Разложить в ряд Фурье функцию $f(x)$ на $[a, b]$ по косинусам или по синусам
 Построить график второго приближения (используя первые две гармоники ряда) на $[a, b]$. Вычислить $S(a)$, $S(b)$.
 Построить график суммы $S(x)$ ряда Фурье, $(-\infty, +\infty)$
 Написать равенство Парсеваля, используя полученное разложение в ряд Фурье и вычислить сумму полученного числового ряда в правой его части.

N вар	$f(x)$	$[a, b]$	$\frac{\cos x}{\sin x}$	N вар	$f(x)$	$[a, b]$	$\frac{\cos x}{\sin x}$
1	$x+1$	$[0, 2]$	(2)	16	$2-x^2$	$[-2, 0]$	(1)
2	$2x-\pi$	$[0, \pi]$	(1)	17	$1-x$	$[0, 2]$	(2)
3	$2x+3$	$[-1, 0]$	(1)	18	$x^2-\pi$	$[-\pi, 0]$	(1)
4	x^2	$[0, 2\pi]$	(1)	19	$x^2-0,5$	$[0, 1]$	(1)
5	$\frac{\pi-x}{2}$	$[0, 2\pi]$	(2)	20	x	$[-1, 1]$	(2)
6	x	$[0, \pi]$	(1)	21	x	$[0, 4]$	(2)
7	$\frac{2-x}{3}$	$[-1, 0]$	(2)	22	$4-x$	$[2, 6]$	(2)
8	$ x $	$[0, \pi]$	(2)	23	$ \cos x $	$[0, \pi]$	(1)
9	$\frac{2-x}{2}$	$[0, 1]$	(1)	24	$ \sin x $	$[0, \pi]$	(1)
10	$\frac{\pi}{4} - \frac{x}{2}$	$[0, \pi]$	(2)	25	x^2-4x	$[0, 2]$	(1)
11	$\frac{\pi-x}{2}$	$[-\pi, 0]$	(2)	26	$x-4\pi$	$[4\pi, 5\pi]$	(2)
12	$x+1$	$[0, 2]$	(1)	27	x^2+x	$[-1, 0]$	(1)
13	$\frac{x^2-x}{2}$	$[0, 1]$	(2)	28	$\frac{x+1}{3}$	$[-1, 0]$	(2)
14	$\frac{x+3}{2}$	$[-1, 0]$	(2)	29	x^2+1	$[-2, 0]$	(1)
15	$(x-2\pi)^2$	$[\pi, 3\pi]$	(1)	30	x^2-4	$[0, 1]$	(1)